



# **Installing Your Multifunction to additional computers on the network**

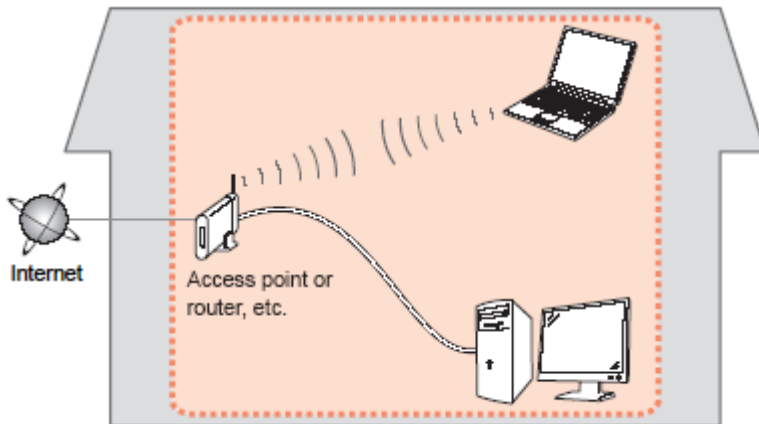
**PIXMA MX472**

**Mac OS**

# Preparing to Connect the Multifunction To the Network

## Network Requirements

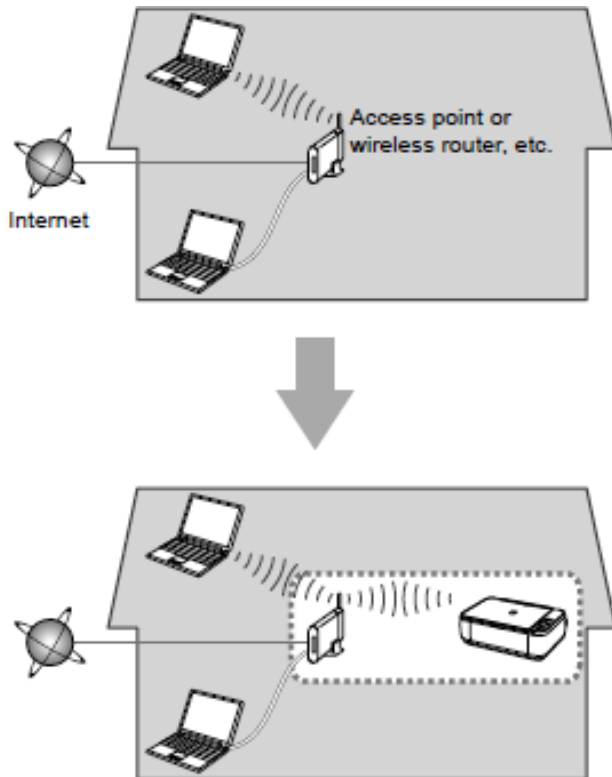
Before connecting the machine to the network, make sure that configuration of the computer and access point or router is complete, and that the computer is connected to the network.



## Wireless Connection

Before connecting the machine to the network, the computer needs to be connected to the network. Make sure that configuration of the computer and access point or router is complete.

# Preparing to Connect the Multifunction To the Network



## Notes on Network Connection

- The configuration, router functions, setup procedures and security settings of the network device vary depending on your system environment. For details, refer to your device's instruction manual or contact its manufacturer.
- In an office setup, consult your network administrator
- If you connect to a network that is not protected with security measures, there is a risk of disclosing data such as your personal information to a third party.
- Place the machine and computer on the same network segment.

# Installing the Drivers & Software

## Software Installation

To use the machine by connecting it to a computer, software including the drivers needs to be copied (installed) to the computer's hard disk. Installation time varies depending on the computer environment or the number of application software to be installed.

### **IMPORTANT**

- Log on as the administrator (or a member of the Administrators group).
- Quit all running applications before installation.
- Do not switch users during the installation process.
- Internet connection may be required during the installation. Connection fees may apply. Consult the internet service provider.
- It may be necessary to restart your computer during the installation process. Follow the on-screen instructions. The installation resumes once your computer has restarted.
- If the firewall function of your security software is turned on, a warning message may appear that Canon software is attempting to access the network. If such a warning message appears, set the security software to always allow access.

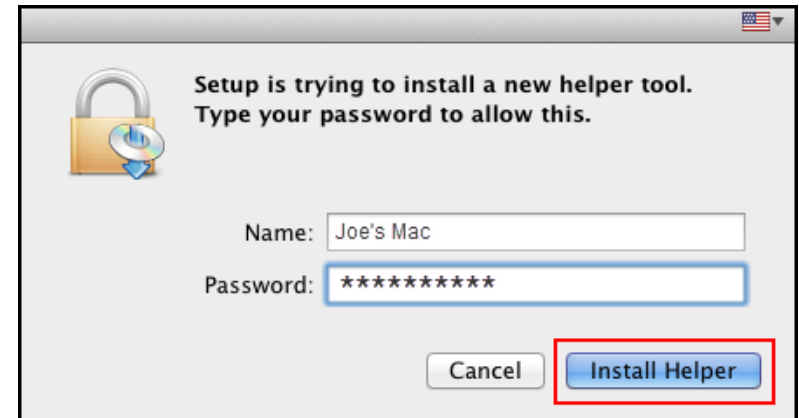
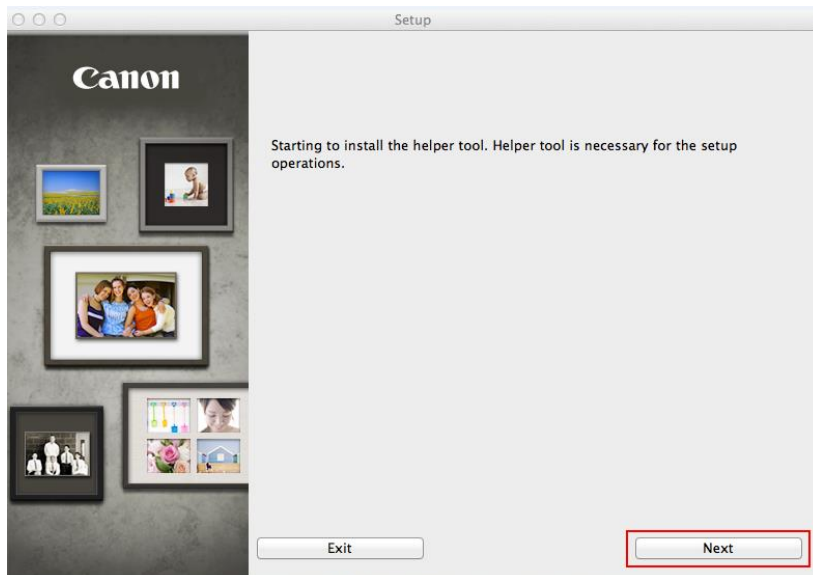
# Installing the Drivers & Software

If your PIXMA MX472 has already been set up on your wireless network, it is only necessary to install the software and drivers to the additional computer(s) on your wireless network. The network connection will be confirmed automatically. It is not necessary to reset the printer or make additional settings.

To set up your PIXMA MX472 to additional computer(s) on your wireless network, you must first download the software to your computer.  
[Click here to download.](#)

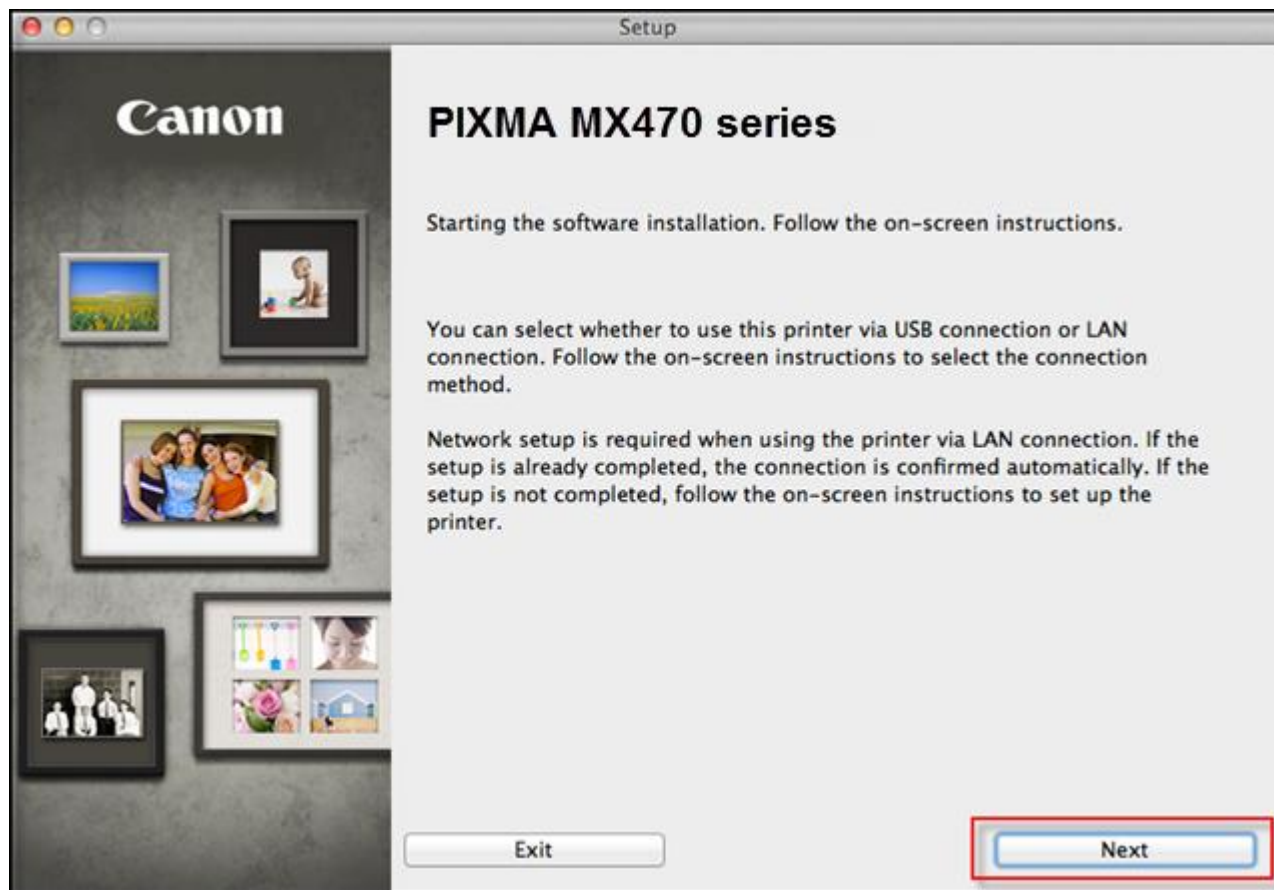
After the file, mac-MX470-1\_0-mcd.dmg, has downloaded successfully, double-click it to start the install procedure.

Click **Next** on the first screen. If prompted, enter the Administrative Password and click **Install Helper** to continue.



# Installing the Drivers & Software

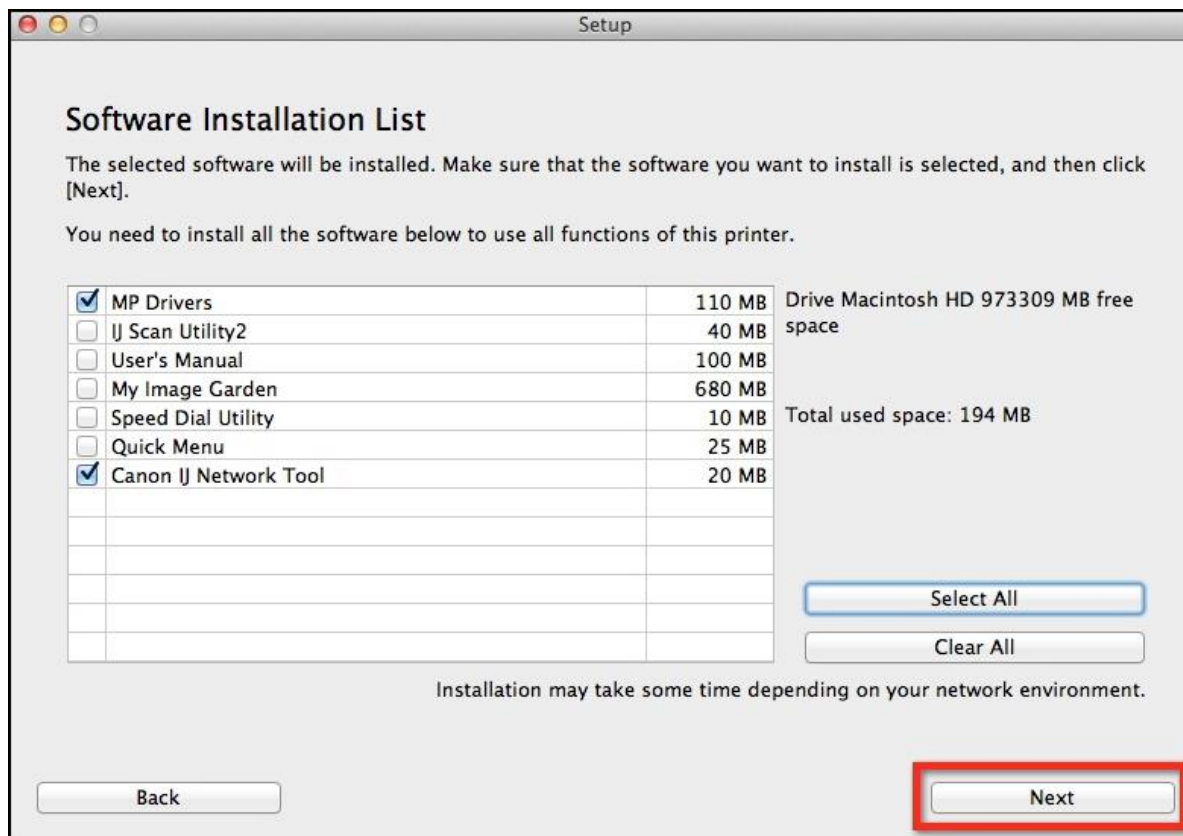
Click **Next** on the initial screen



# Installing the Drivers & Software

Continue following on-screen instructions. On the **Software Installation List**, select \*software to install and click **Next**.

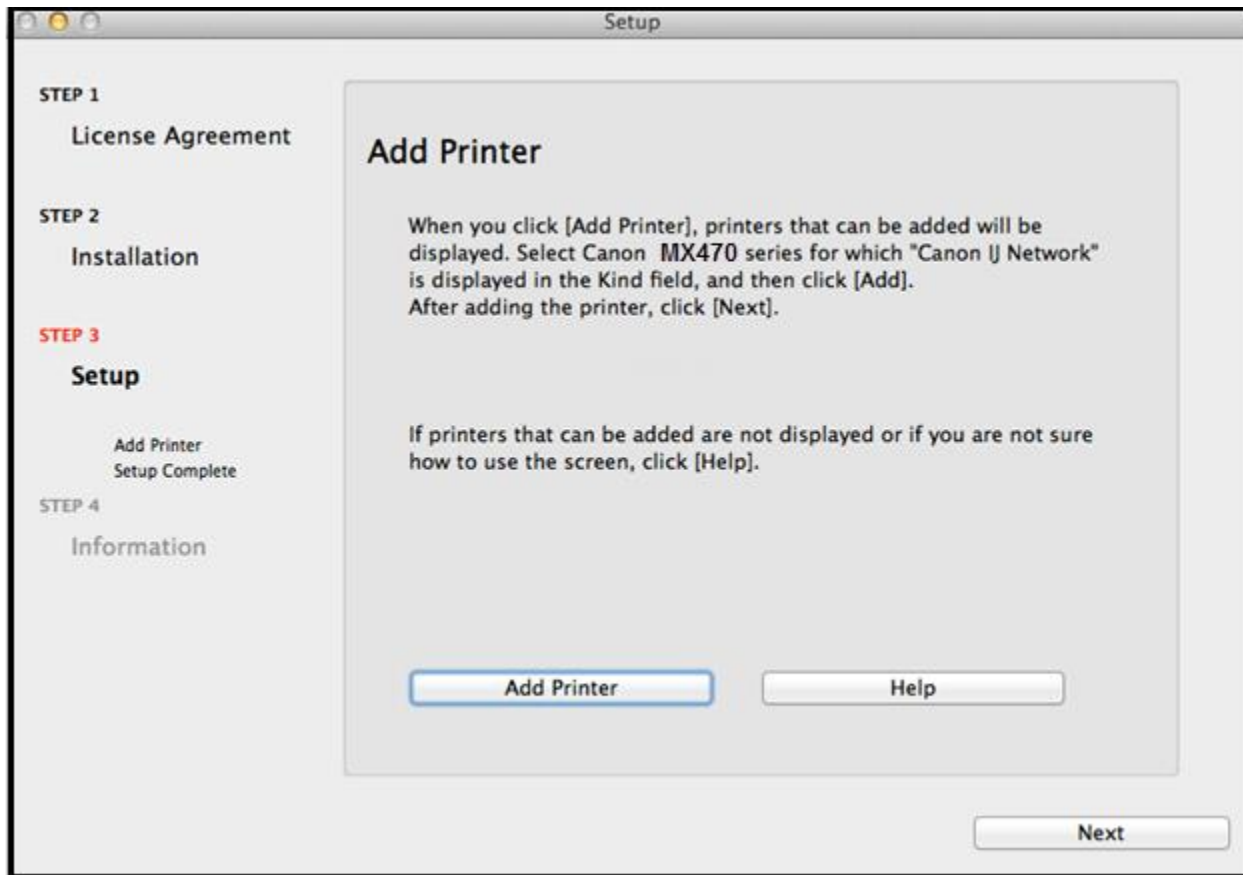
\***MP Drivers** and **Canon IJ Network Tool** are required and cannot be deselected. We recommend installing **IJ Scan Utility2**, **My Image Garden** and **Quick Menu** to take full advantage of the printer's features.



# Installing the Drivers & Software

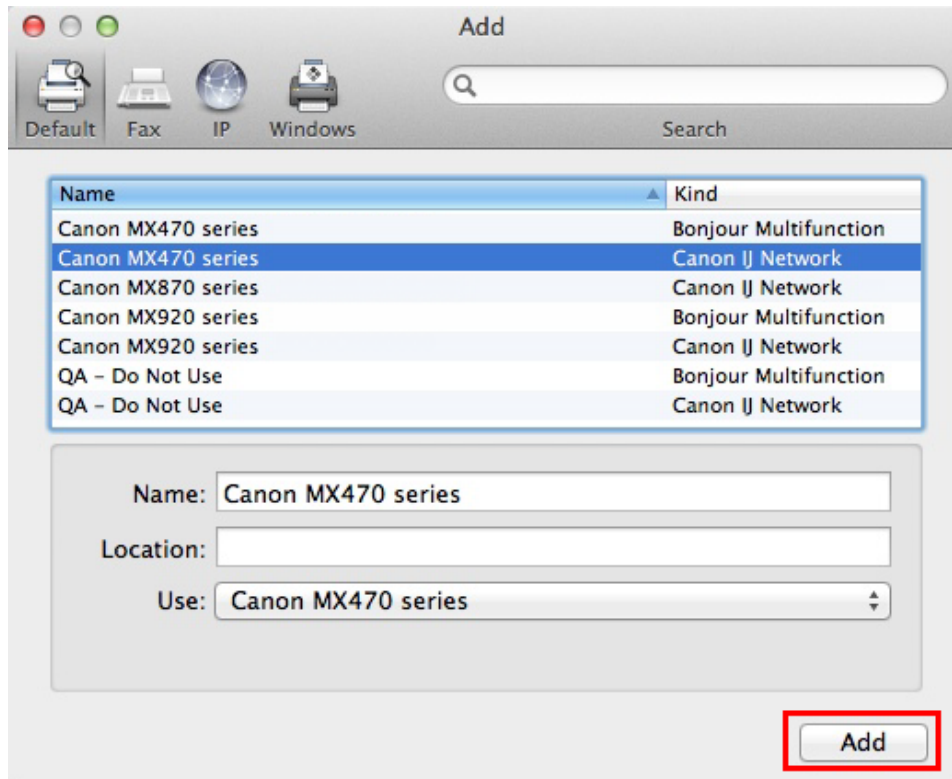
Continue following the on-screen instructions.

When the **Add Printer** screen appears, click **Add Printer**.



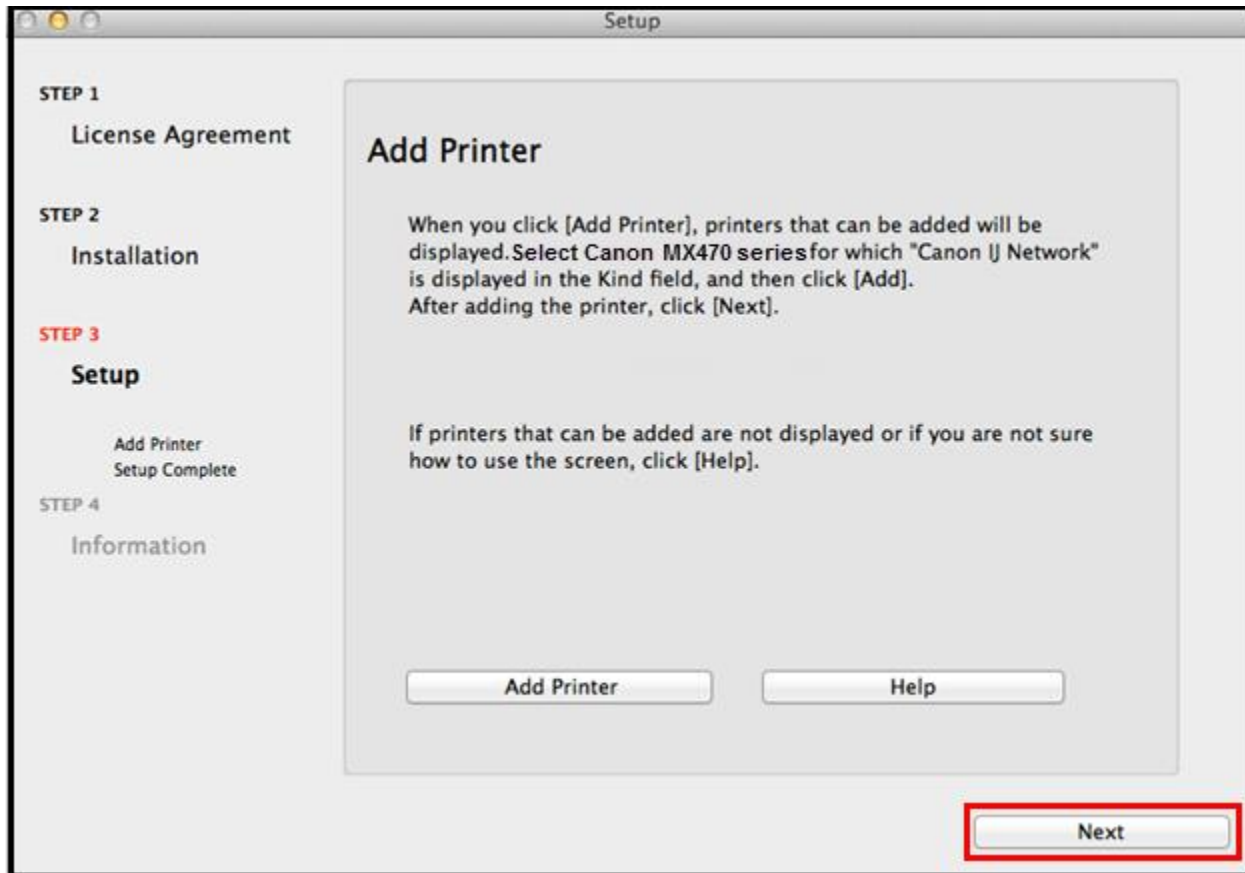
# Adding the Printer

Select the **Canon MX470 series** with **Canon IJ Network** listed in the **Kind** column, then click **Add**.



# Adding the Printer

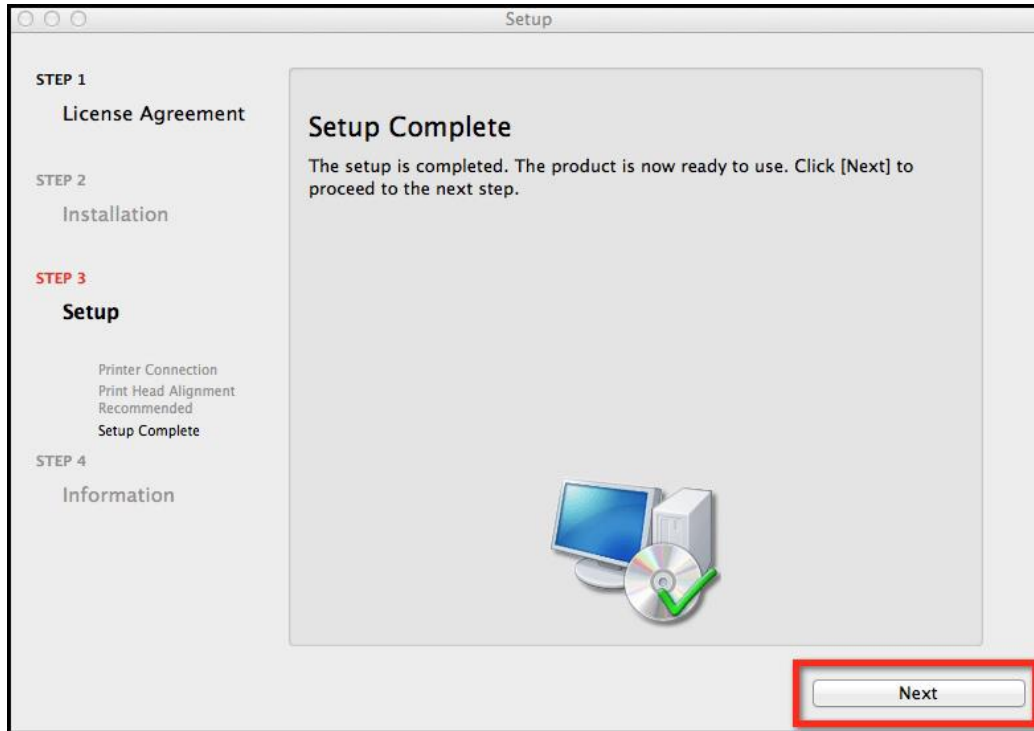
Click **Next** on the **Add Printer** screen



# Completing the Setup

Continue following on-screen instructions.

When the **Setup Complete** screen appears, click **Next**.



At this point, setup of the printer and network is complete. Continue to follow any remaining on-screen instructions to finish and exit the setup program.